

B747-8i
MSN 37075

AIRCRAFT SPECIFICATION SUMMARY

Completion outfitted at AMAC Aerospace AG Basel



GENERAL INFORMATION

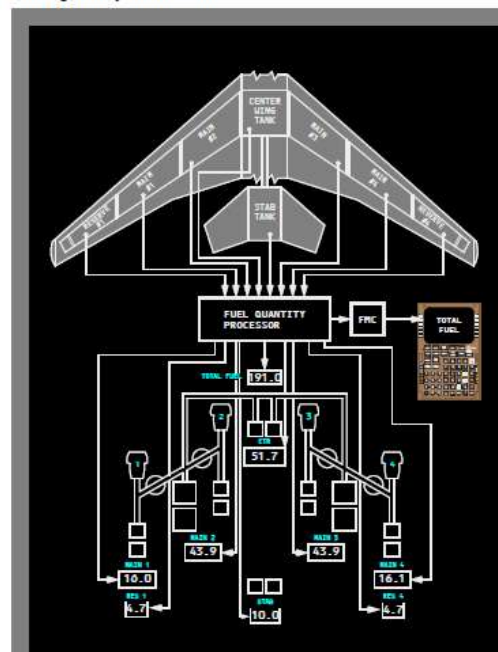
Manufacturer Serial Number **37075** Engine Model **GEnx-2B67/P**
 Line / Variable Number : **1449 /RC005** Engine Producer **GE Aviation**
 Date of OEM Ferry Flight: **31 Mar 2012**
 VIP cabin Refurbishing Period: **10 Nov 2012 to 01 July 2015**
 Zero Clock Setting date: **10 May 2015**
 Entry Date of First Service: **13 Jul 2015**

Fuel Tank Capacities

Tank	Liters	Kilograms *
1 and 4 Main	40,276	32,337
2 and 3 Main	109,246	87,713
Center	64,352	51,668
Reserves	11,612	9,323
Stabilizer	12,492	10,030
Total	237,978	191,071

* Usable fuel at level attitude, fuel density = 0.8029 kilograms per liter.

Fuel Quantity Indication



OPERATIONAL WEIGHTS

Maximum Taxi Weight	449'056 kg	987'923.2 lbs.
Maximum Takeoff Weight (MTOW)	447'695 kg	984'929.0 lbs.
Maximum Landing Weight (MLW)	312'071 kg	686'556.2 lbs.
Maximum Zero Fuel Weight (MZFW)	295'288 kg	649'633.6 lbs.
Manufacture-Empty Weight	213'188 kg	469'013.6 lbs.

TIME / CYCLE DATA - AIRFRAME (as of 31 May 2020)Hours since New **1069:3 Flight Hours**Cycles since New **297 Flight Cycles**

TIME / CYCLE DATA - ENGINES

<u>Pos.</u>	<u>Serial No.</u>	<u>Hrs / Cycles Since New</u>	<u>Item / Limit</u>	<u>Shop Visit</u>
1	959445	1041:23 Hrs / 279 Cyc	N/A	No
2	959444	1041:23 Hrs / 279 Cyc	N/A	No
3	959443	1041:23 Hrs / 279 Cyc	N/A	No
4	959446	1041:23 Hrs / 279 Cyc	N/A	No

TIME / CYCLE DATA – APU

APU HRS: 2743

APU CYC: 1457

MAINTENANCE CHECK DATA

<u>Check</u>	<u>Check Life</u>	<u>Last Actioned</u>	<u>Next Due</u>
6 MO CHECK	6 Months	03 Jun 2020	02 Dec 2020
1 YR CHECK	1 Year	03 Jun 2020	02 Jun 2021
2 YR CHECK	2 Years	19 July 2019	18 July 2021
3 YR CHECK	3 Years	31 Aug 2018	30 Aug 2021
4 YR CHECK	4 Years	19 July 2019	18 July 2023
6 YR CHECK	6 Years	N/A	12 Jul 2021
9 YR CHECK	9 Years	N/A	12 Jul 2024
12 YR CHECK	12 Years	N/A	12 Jul 2027
LDG Overhaul	12 Years	N/A	30 March 2024

Note: Last Maintenance Performed by AMAC Aerospace AG Basel EASA Approval Certificate N° CH.145.0363& CAACI Approval Certificate N°015- CAY-AMO-2008 on the 03rd of June 2020, accomplished schedule MX tasks (12MO+ OOP tasks), SB Package and ADs.

INTERIOR CONFIGURATION

Seating Capacity (TT&L): **89 Passenger Seats**
14 Cabin Crew Seats (Flight Attendants)

Galleys:

- Main Deck fwd Galley (Cabin Innovations): **G5, G5A, G5R, G5L**
- Main Deck mid Galley (Cabin Innovations): **G6, G7A, G7B, G8A, G8B**
- Main Deck aft Galley (Cabin Innovations): **G9, G9R**
- Upper Deck Crew Galley (Cabin Innovations): **G1, G1A**
- Upper Deck Galley (Cabin Innovations): **G2, G3, G4**
- **Galley Cart Lift also installed**

Lavatories:

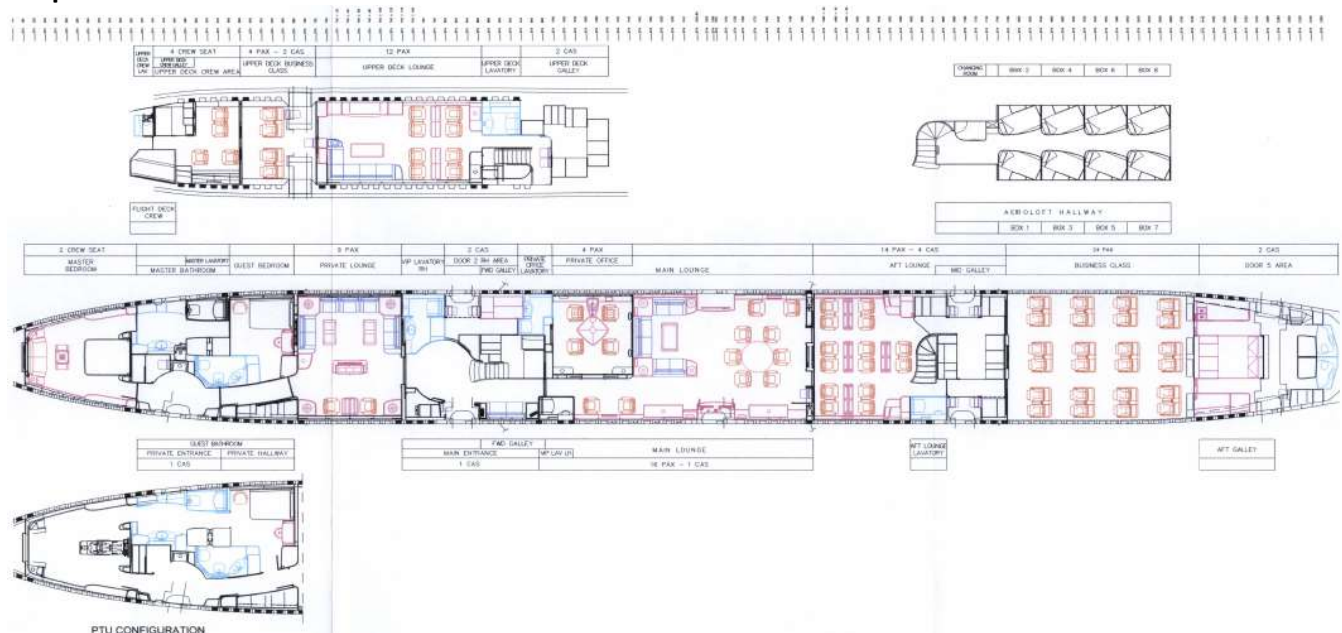
Two Bathrooms

- Master bathroom
- Guest bathroom

Nine Lavatories

- Master lavatory
- VIP lavatory RH
- Private office lavatory
- VIP lavatory LH
- Aft lounge lavatory
- Door 5 lavatory RH
- Door 5 lavatory LH
- Upper deck crew lavatory
- Upper deck lavatory

Graphic of LOPA



Graphic of Seats

Below are few glimpses of some of the seats installed:



Upper Deck double seat



Upper Deck Lounge



Master Bedroom



Fwd Lounge



Upper Deck



Private Office



Aft Double Seating Area

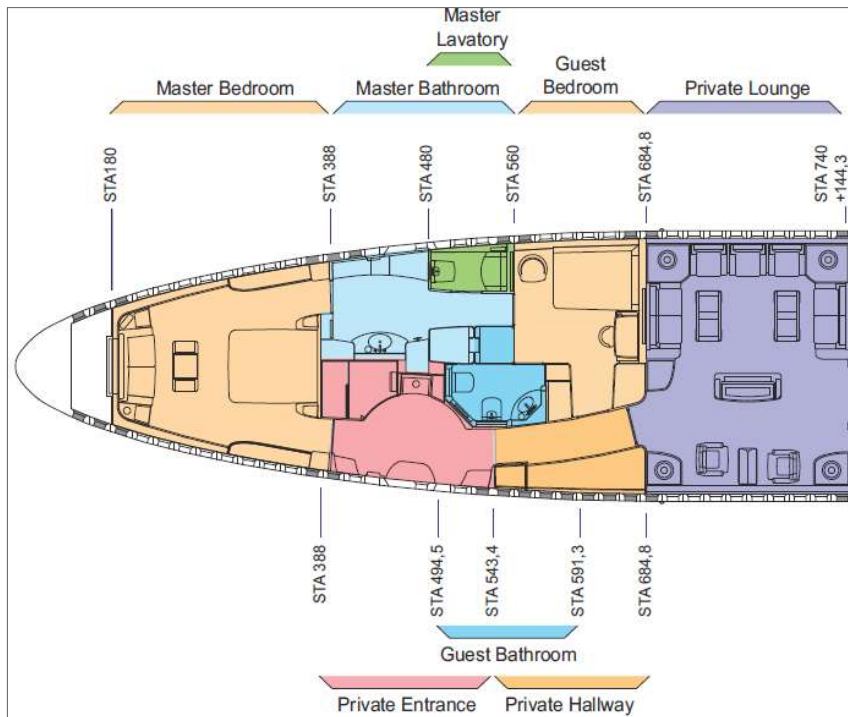


Club Seating Area

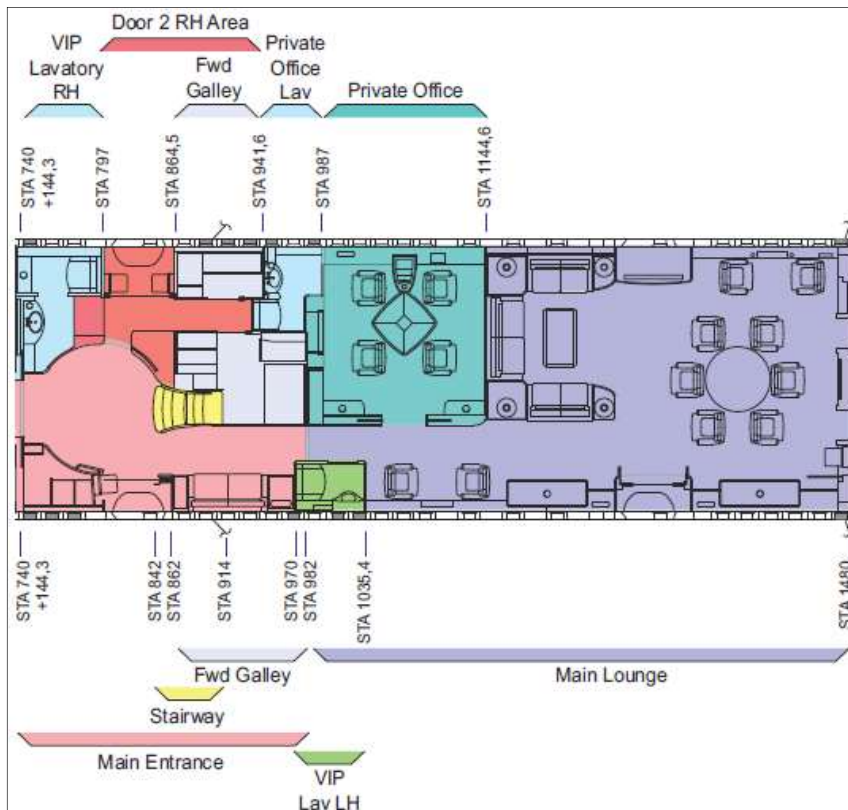
INTERIOR MAIN FEATURES

- A/C passenger compartments are divided in four zones (I-IV) including overhead passenger module (OPM) which has capacity of 08 beds.

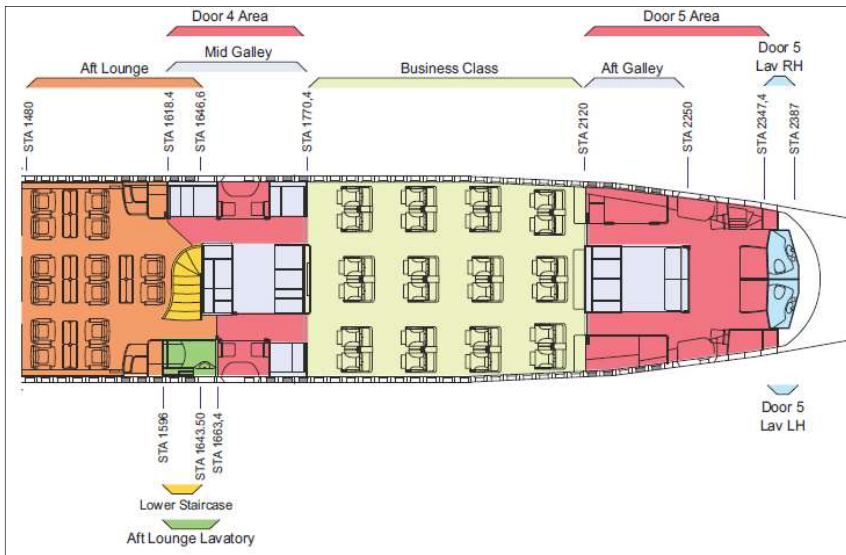
Zone-I



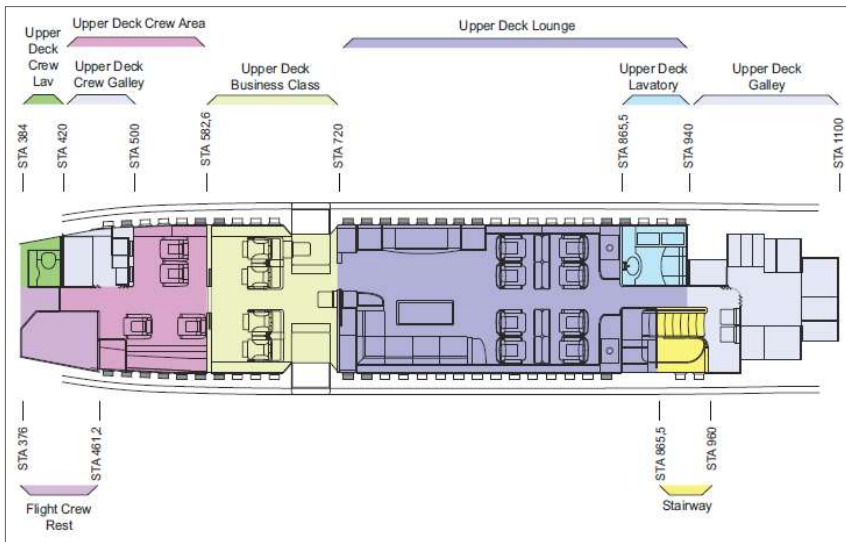
Zone II



Zone-III



Zone-IV



- Insulation blankets installed which provides thermal insulation and noise attenuation functions.
- Zone I and Zone II have 50 dB +/-2dB, Zone III (aft lounge) and Zone IV (upper deck lounge) have 52 dB +/-2dB.
- Electric Window shades and Roman shades are installed.
- Portable fire extinguishers are installed throughout in the interior of the aircraft.
- Anti-intrusion system is installed which provide highly reliable aircraft intrusion monitoring for the unattended aircraft.
- Water system installed to provide hot and cold portable water to each galley sink, each lavatory sink, bidet, hand sprayer and showers, cold water to the lavatory toilets and cold water to humidification system.
- Digital IFE system from PGA with Audio/Video On Demand (AVOD) / Digital Rights Management (DRM) and Game capability

- Five (5) GES (Global Entertainment Servers) connected in series via Ethernet, to store and manage the distribution of AVOD audio/video and/or audio only media. Each GES can manage up to 20 AVOD clients.
- Main sources & components
 - Camera systems (video only)
 - iPod / HD port (audio/video) HDMI/USB/iPod/RCA
 - 13 Blu-ray players (audio/video)
 - AVOD system (audio/video)
 - Airshow Moving map (video only)
 - Live TV/radio (audio/video).
 - Moving Map (Airshow)
 - HD Cameras (FWD CAM, DN ZOOM) and Quad cam in anti-intrusion system
 - Passenger Address (PA) System
 - 55" monitor X 5
 - 46" monitor X 4
 - 40" monitor X 1
 - 32" monitor X 1
 - 17.3" VTS Monitor X 2
 - 15.6" VTS Monitor X 31
 - IFE speakers
 - Subwoofers
 - Headphone jack plugs
- Cabin Management System with Five (5) 15.6" CMS VTS
- GCS Panasonic eXConnect Ku-band system provides broadband internet connectivity as well as eXTV global television service.
- Honeywell JetWave Ka-band connectivity system is also installed.
- Honeywell CX900 router makes it possible to provide fall back option in case one of the connectivity system is not available, in sequence of Ka, Ku and SBB system.

INTERIOR EQUIPMENT

Some of the main components are listed below;

ATA	Description	Manufacturer / Model	Qty
21	HUMIDIFIER	CTT Systems	8
21	ZONAL DRYER	CTT Systems	4
21	CAIR CONTROL UNIT	CTT Systems	1
21	ELECTRICAL HEATING UNIT	Liebherr-Aerospace Toulouse SAS	3
21	AIR SHUT OFF VALVE ASSY	Honeywell Intl Inc Engine & Sys	7
21	FAN - LOWER RECIRCULATION	Liebherr-Aerospace Toulouse SAS	3
21	ACTUATOR-RAM AIR	Liebherr-Aerospace Toulouse SAS	6
21	FLOW CONTROL VALVE	Liebherr-Aerospace Toulouse SAS	3
21	ACM	Liebherr-Aerospace Toulouse SAS	3
21	CONTROLLER-HEATER,ELECTRICAL	Liebherr-Aerospace Toulouse SAS	3
21	VALVE - SHUTOFF FWD E/E COMPT CARGO HEAT	Honeywell Intl Inc Engine & Sys	4
21	HEAT EXCHANGER	Liebherr-Aerospace Toulouse SAS	3
21	VALVE - TRIM SHUT OFF	Liebherr-Aerospace Toulouse SAS	1
21	TRIM AIR VALVE	Liebherr-Aerospace Toulouse SAS	8
21	INJECTOR - WATER SPRAYER	Liebherr-Aerospace Toulouse SAS	6
21	FLOW REGULATING VALVE	Liebherr-Aerospace Toulouse SAS	2
21	HEATER - OVERHEAD FLIGHT ATTENDANTS REST MODULE AT DOOR 3	BF Goodrich Ice Protection Sys	2
21	FAN - MIXED FLOW 9 INCH DIAMETER	Hamilton Sundstrand Corp	2
21	SNSR - ZONE A	Liebherr-Aerospace Toulouse SAS	7
21	ICU-OUTFLOW VALVE	Hamilton Sundstrand Corp	2
21	LAV-GALLEY VENT FAN	Hamilton Sundstrand Corp	2
21	LAV-GALLEY VENT FAN	Hamilton Sundstrand Corp	2
21	CARGO REGULATING S/O VALVE	Liebherr-Aerospace Toulouse SAS	1
21	VALVE - RECIRCULATION SHUT OFF	Liebherr-Aerospace Toulouse SAS	3
21	PRESSURE REGULATING VALVE	Liebherr-Aerospace Toulouse SAS	2
21	VALVE-AIR SHUT OFF	Whittaker Corp	1
21	EXCHANGER-HEAT	Liebherr-Aerospace Toulouse SAS	1
21	CONTROLLER - INTEGRATED AIR SYS	Liebherr-Aerospace Toulouse SAS	3
21	TEMPERATURE CONTROL VALVE	Liebherr-Aerospace Toulouse SAS	3
21	P/C CARD-COOLG CNTRL	BAE Systems Control	1
21	HUMIDIFIER EVAPORATION UNIT	CTT Systems	8
21	CATALYTIC CONVERTER	Honeywell Intl Inc Engine & Sys	3
21	CABIN PRESS CNTRL UNIT	Hamilton Sundstrand Corp	2
21	A/C PACK	Liebherr-Aerospace Toulouse SAS	3
21	VALVE - SHUTOFF, 777 ENVIRONMENTAL CONTROL SYSTEM	Whittaker Corp	2
21	SHUTOFF VALVE	Eaton Corp	1
21	VALVE-AIR SHUT OFF	Whittaker Corp	1
21	OUTFLOW VALVE ASSY	Hamilton Sundstrand Corp	2
21	P/C CARD-ENVIRON CNTRL	BAE Systems Control	2
21	FAN - 9 INCH DIAMETER MULTI PURPOSE	Hamilton Sundstrand Corp	1
21	VALVE-OCCUPANT BACKUP SHUTOFF	Liebherr-Aerospace Toulouse SAS	1

21	LAV-GALLEY VENT FAN	Hamilton Sundstrand Corp	2
23	WLAN ACCES POINT	PGA	6
23	GES	PGA	5
23	GLCU	PGA	8
23	BLURAY PLAYER	PGA	13
23	MPB	PGA	3
23	INDIV KTS LEFT	PGA	44
23	INDIV KTS RIGHT	PGA	48
23	15.6" VT	PGA	36
23	55" TV	PGA	5
23	46" TV	PGA	4
23	CORDED SEAT REMOTE	PGA	32
23	ADC-2 AUDIO/VIDEO A/D CONVERTER	PGA	18
23	BROADBAND CONTROLLER	Panasonic	1
23	CELL MODEM	Panasonic	1
23	ADB-3	PGA	28
23	GSM ALRU	True North	2
23	FAX MULTIFUNCTION MFC5490-CN	-	2
23	40" TV	PGA	1
23	2CH IRIDIUM TRX	-	1
23	AUDIO SWITCHER RACK	PGA	2
23	CABIN SERVICES SYSTEM CONTROLLER	Panasonic	1
23	17.3" VTS	PGA	2
24	FREQUENCY CONVERTER MODEL 4H3500-3A-NBH-2343	Avionics Instruments INC	9
24	INVERTER - 1KVA STATIC INVERTER	Avionics Instruments INC	3
25	OVEN-ATLAS-STEAM-SINGLE	SELL GMBH	7
25	MACHINE-ESPRESSO	AEROLUX LTD	6
25	LARGE FRIDGE/FREEZER 6.6 CU.FT	Air Cabin Engineering Inc.	6
25	SLIDE/RAFT ASSY 747-8 DOOR 1	AIR CRUISERS COMPANY	1
25	OVEN-MICROWAVE	JAMCO CORPORATION	2
25	AIR CHILLER (4500BTU/HRS)	B/E AEROSPACE INC	1
25	REFRIGERATOR / FREEZER	B/E AEROSPACE INC	3
25	WATER HEATER	Dynamo Aviation Inc.	7
25	SURVIVAL KIT	AIR CRUISERS COMPANY	1
25	VCD	PGA	10
25	MODULE ASSY - YAW DAMPER STAB	BAE SYSTEMS CONTROLS INC.	2
25	OVEN - MICROWAVE WAVEJET	SAFRAN CABIN STERLING INC	2
25	BUN WARMER	B/E AEROSPACE INC	1
25	RAFT ASSY-SLIDE	GOODRICH CORPORATION	1
25	OVEN # WARMING OVEN LEFT HINGED	-	2
25	SLIDE/RAFT ASSY	GOODRICH CORPORATION	1
25	DISHWASHER	AMAC Aerospace	1
25	RDT TEMPUS IC	REMOTE DIAGNOSTIC TECHNOLOGIES LTD	1
25	TRASH COMPACTOR	-	2
25	KIT-FIRST AID	AEROMEDICS INNOVATION LTD	2
25	ELT - EMERGENCY LOCATOR TRANSMITER	ELTA	2

25	LIFEPAK 1000	Physio-Control Inc.	1
25	OVEN GOAT	-	1
25	INDUCTION OVEN	IACOBUCCI HF Electronics S.p.A.	3
25	AIR CHILLER (2200BTU/HRS)	B/E AEROSPACE INC	1
25	CHILLER-AIR	B/E AEROSPACE INC	1
25	SLIDE/RAFT ASSY	GOODRICH CORPORATION	1
25	EVACUATION SLIDE U/D SYSTEM	AIR CRUISERS COMPANY	2
25	OVEN-STEAM-DOUBLE	SELL GMBH	3
25	KIT-MEDICAL	AEM LTD	1
25	MEGAPHONE	AVIALL PTE LTD	1
25	CART LIFT CONTROL PANEL	Boeing	1
25	EVAC SLIDE ASSY	GOODRICH CORPORATION	1
25	BEACON - LF ULB	NOVEGA PRODUKTIONSSYSTEME GMBH	1
25	RAFT ASSY-SLIDE	GOODRICH CORPORATION	1
25	SLIDE/RAFT ASSY	GOODRICH CORPORATION	1
35	CYLINDER - OXYGEN 115 CUBIC FEET	Oxygen Systems US	15
35	PBE-PROTECTIVE BREATHING EQUIPMENT,CHEMICAL OXYGEN	Oxygen Systems US	20
35	CYLINDER ASSY-OXYGEN,POTABLE	Oxygen Systems US	13
38	VALVE DRAIN	Parker Hannifin Corporation	14
38	WATER QTY XMTR	AVTECHTYERR INC	4
38	CONTROL MODULE, POTABLE	AVTECHTYERR INC	3
38	MODULE ASSY-GRAY WATER	DIEHL AEROSPACE GMBH	6
38	WATER STERILIZER ASSY	Goodrich De-Icing & Specialty Sys	6
38	TANK AY - FORWARD FILL/PRESELECT SYSTEM, POTABLE WATER	The Yokohama Rubber LTD	3
38	CONTROL ASSY - MODULE, POTABLE WATER	ITT Aerospace Controls	2
38	PUMP - POTABLE WATER ELECTRIC MOTOR DRIVEN	ITT Aerospace Controls	2
38	SWITCH - PRESSURE POTABLE WATER, ELECTRIC MOTOR DRIVEN	ITT Aerospace Controls	4
38	WATER TANK	YOKOHAMA RUBBER COMPANY	4

AVIONICS / NAVIGATION EQUIPMENT

Standard B747-8i Flight Deck Configuration, some of the main components are listed below;

ATA	Description	Manufacturer / Model	Qty
22	FLIGHT CONTROL COMPUTER	Rockwell Collins	3
22	CENTRAL LATERAL CONTROL	MOOG INC	2
22	AFDS MODE CONTROL PANEL	Rockwell Collins	1
22	ACCELEROMETER	ALLIED-SIGNAL AEROSPACE	4
23	VHF DATA TRANSCIEVER VHF2100(VDL2)	Rockwell Collins	3
23	RDU (US-US)	Rockwell Collins	2
23	DIGITAL VIDEO RECORDER	Securaplane INC	1
23	ANTENNA - VHF	EDO Corporation	3
23	BEACON-ACOUSTIC,UNDERWATER LOCATOR 90DAYS	L3 Aviation Product	2
23	DIGITAL COUPLER - HF ANTENNA, CPL920D - HFDR	Rockwell Collins	3
23	RECORDER ASSY-COCKPIT VOICE	Rockwell Collins	1
23	AUDIO DISTRIBUTION AMPLIFIER	PGA	9
23	ELT NAVIGATION INTERFACE UNIT	Rockwell Collins	1
23	EMERGENCY LOCATOR TRANSMITTER	Rockwell Collins	1
23	EFIS CONTROL PANEL	Rockwell Collins	2
23	CONTROL DISPLAY UNIT (CAMERA, DAI-08 READY)	Securaplane	1
23	SATELLITE DATA UNIT	Rockwell Collins	1
23	EMERGENCY LOCATOR ANTENNA	Rockwell Collins	1
23	VOICE REC CONTROL PANEL	Rockwell Collins	1
23	COMMUNICATIONS MANAGEMENT UNIT	Rockwell Collins	1
23	TRANSCEIVER HFS900D-HFDR	Rockwell Collins	2
23	CAMERA - QUAD ALL COLOR	Securaplane	1
23	SELCAL DECODER	Rockwell Collins	1
23	AIRPLANE PERSONALITY MODULE	Rockwell Collins	1
23	AIRBORNE DATA LOADER	BAE SYSTEMS CONTROLS INC.	1
23	ANTENNA, BROADBAND, AURA LE	Panasonic	1
23	HD CAM ZOOM	Securaplane	1
23	AUDIO MGMT UNIT	Rockwell Collins	1
23	32" XTRA FLAT MONITOR (STEP	PGA	1
23	REMOTE AREA MICROPHONE	Rockwell Collins	1
23	HIGH GAIN ANTENNA	Rockwell Collins	1
23	HF COUPLER MOUNT	Rockwell Collins	1
23	LNA / DIPLEXER	Rockwell Collins	1
23	ANTENNA-DBS OUTLINE, FUSELAGE MOUNT UNIT	Rockwell Collins	1
31	P/C CARD-DFDA	BAE SYSTEMS CONTROLS INC.	1
31	PRINTED CIRCUIT ASSY	BAE SYSTEMS CONTROLS INC.	6
31	INTEGRATED DATA MANAGEMENT UNIT	Rockwell Collins	1
31	SCID CARD	BAE SYSTEMS CONTROLS INC.	5
31	BEACON-ACOUSTIC,UNDERWATER LOCATOR	Dukane	2
31	EICAS INTERFACE UNIT	Rockwell Collins	3
31	DFDR ACCELEROMETER	Rockwell Collins	1

31	LCD INTEGRATED DISPLAY UNIT	Rockwell Collins	6
31	QAR-QUICK ACCESS RECORDER	Teledyne Controls	1
31	INCLINOMETER	RIEKER Instrument Company	2
31	FULL FORMAT PRINTER	Rockwell Collins	1
31	P/C CARD-ASC	BAE SYSTEMS CONTROLS INC.	2
31	DIGITAL FLIGHT DATA RECORDER	Rockwell Collins	1
31	MAWEA CARD FILE MODULE	BAE SYSTEMS CONTROLS INC.	1
31	DISPLAY SELECT PANEL	Rockwell Collins	1
32	BRAKE SYSTEM CONTROL UNIT (BSCU)	CRANE Company	1
34	ANTENNA - RADIO ALTIMETER	Sensor System INC	6
34	ADM - AIR DATA MODULE	Thales AVS France SAS	6
34	TRANSCEIVER - WEATHER RDR, WRT-2100	Rockwell Collins	2
34	COMPUTER - GND PROXIMITY WARNING	Honeywell	1
34	MULTI-MODE RECEIVER	Rockwell Collins	3
34	ATC CONTROL PANEL	Rockwell Collins	1
34	RECEIVER - ADF900	Rockwell Collins	2
34	ANTENNA-GPS	Sensor Systems INC	3
34	ANTENNA-ATC AND DME	EDO Corporation	4
34	ATC TRANSPONDER	Rockwell Collins	3
34	MODE SELECT UNIT	Honeywell	1
34	SENSOR-ANGLE OF ATTACK	BF GOODRICH ROSEMOUNT	2
34	PITOT/STATIC PROBE	BF GOODRICH ROSEMOUNT	2
34	ANTENNA-ADF	Rockwell Collins	2
34	FLIGHT MGMT COMPUTER	Honeywell	2
34	LRRA TRANSCEIVER	Rockwell Collins	3
34	COMPASS	SIRSS Navigation	1
34	PANEL - WEATHER RADAR DUAL CONTROL	Rockwell Collins	1
34	ANTENNA - LOCALIZER VHF	Sensors System INC	2
34	PROBE - TOTAL AIR TEMPERATURE	ROSEMOUNT Aerospace	2
34	ANTENNA-WEATHER RADAR	Rockwell Collins	1
34	AIR DATA INERTIAL REFERENCE UNIT	Honeywell	3
34	PITOT/STATIC PROBE	BF GOODRICH ROSEMOUNT	2
34	CDU-FMS	Honeywell	3
34	ANTENNA - GLIDESLOPE ANTENNA	Sensors System INC	2
34	RCVR - VOR BEACON RECEIVER	Rockwell Collins	2
34	ISFD - INTEGRATED STANDBY FLIGHT DISPLAY	Thales AVS France SAS	1
34	ANTENNA - TCAS DIRECTIONAL	Rockwell Collins	2
34	VOR FLUSH ANTENNA	Sensor Systems INC	1
34	WEATHER RADAR ANTENNA DRI	Rockwell Collins	1
34	"MODULE, AIR DATA"	Thales AVS France SAS	1
34	ANTENNA - MARKER BEACON	EDO Corporation	1
34	DISTANCE MEASURING EQUIPMENT (DME) INTERROGATOR	Rockwell Collins	2
34	TCAS II TRANSMITTER/RECEIVER 7.1	Rockwell Collins	1
44	REMOVABLE SOLID STATE DRIVE	PGA	5
44	KEYBOARD TOUCHSCREEN - ROOM	PGA	38
44	SPEAKER DRIVE MODULE (SDM)	Panasonic	41
44	GXA KA KRFU	Honeywell	1

44	KA-BAND GXA FUSELAGE MOUNTED ANTENNA	Honeywell	1
44	CAP - CABIN ATTENDANT PANEL	Panasonic	3
44	MODULE, CABIN ZONE UNIT	Panasonic	4
44	HONEYWELL CNX-900	Honeywell	1
44	KANDU	Honeywell	1
44	MODMAN	Honeywell	1
44	APM	Honeywell	1
45	CENTRAL MAIN COMPUTER	Rockwell Collins	2
46	EFB DU - ELECTRONIC FLIGHT BAG DISPLAY UNIT	ASTRONAUTICS CORP of AMERICA	2
46	EFB EU - ELECTRONIC FLIGHT BAG, ELECTRONIC UNIT	ASTRONAUTICS CORP of AMERICA	2
73	EEC	BAE SYSTEMS CONTROLS INC.	4

Other specific features:

- FANS-1 and FANS-2 are actively functional. The airplane may use FANS-1 or FANS-2 depending on the route
- ADSB OUT DO260 B compliant.

Cabin Interior Configurations

With this Supplemental Type Certificate (STC) the following two (2) Cabin Interior Configurations have been introduced:

Standard Configuration of Master Bedroom (Fig.1)

- 89 Passengers Seats TT&L
- 14 Cabin Crew Seats TT&L

Medical Configuration of Master Bedroom (Fig. 2) Additional:

- 1 Patient Transport Unit – PAX (Master Bedroom) TT&L
- 2 Cabin Crew Seats (Master Bedroom) TT&L
- 1 Cabin Crew Seat (Master Bedroom) TT&L

Seating Configuration

Standard Configuration:

- Upper Deck Crew Area Four (4) seats TT&L
- Upper Deck Business Class Four (4) seats TT&L
- Upper Deck lounge Twelve (12) seats TT&L
- Master Bedroom Zero (0) seats TT&L
- Private Lounge Nine (9) seats TT&L
- Private Office Four (4) seats TT&L
- Main Entrance Two (2) seats TT&L
- Main Lounge Sixteen (16) seats TT&L
- AFT Lounge Fourteen (14) seats TT&L
- Business Lounge Twenty-four (24) seats TT&L

Cabin Crew Seats

Standard Configuration:

- Upper Deck Business Class Two (2) seats TT&L
- Upper Deck Galley Two (2) seats TT&L

- Master Bedroom Zero (0) seats TT&L
- Private Entrance Zero (0) seats TT&L
- Door 2 Area Three (3) seats TT&L
- Main Lounge One (1) seat TT&L
- Mid Galley Four (4) seats TT&L
- Door 5 Area Two (2) seats TT&L

Medical Configuration

Additional

- Master Bedroom Two (2) seats TT&L
- Private Entrance One (1) seat TT&L

Interior

Galleys:

- Upper Deck Crew Galley - G1/G1 A
- Upper Deck Main Galley - G2
- Upper Deck Main Galley - G3
- Upper Deck Main Galley - G4
- FWD Galley - G5/G5A/G5L/G5R
- Mid Galley - G6
- Mid Galley - G7A/G7B
- Mid Galley - G8A/G8B
- AFT Galley - G9

Lavatories:

- Master LAV RH
- VIP LAV RH
- Private Office LAV
- VIP LAV LH
- AFT Lounge LAV
- Upper Crew Deck LAV
- Upper Deck LAV

Bathrooms

- Master Bathroom
- Guest Bathroom